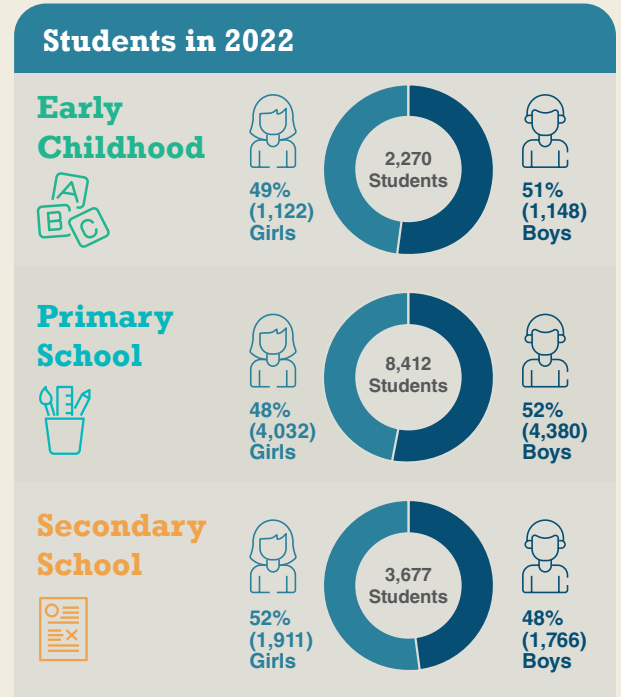
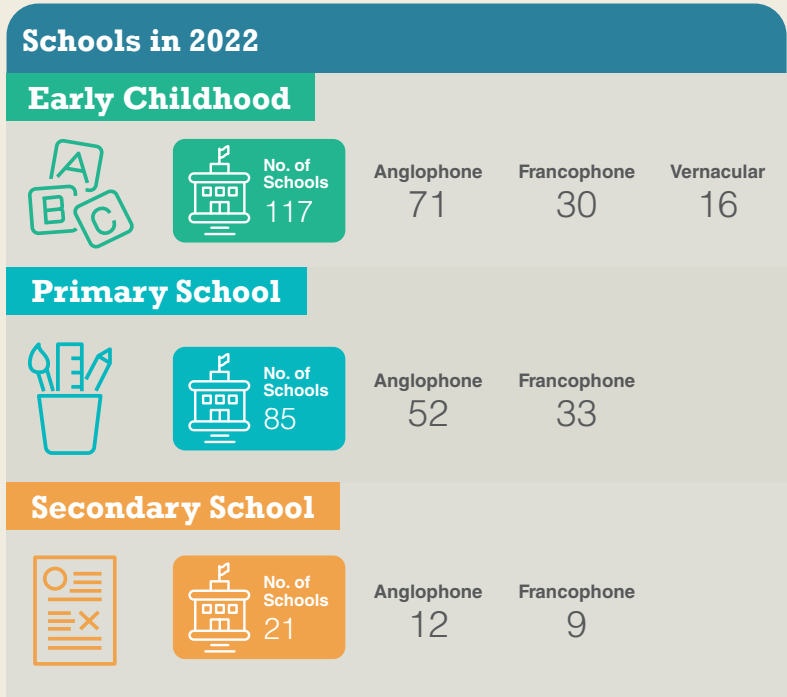


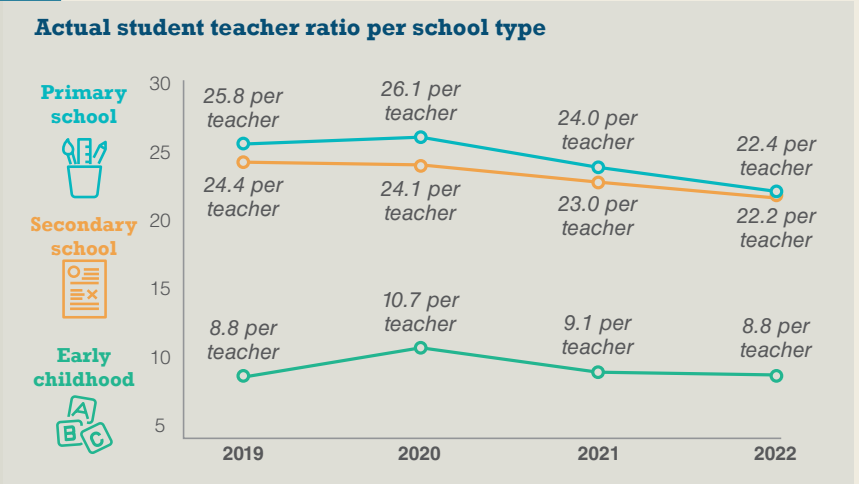
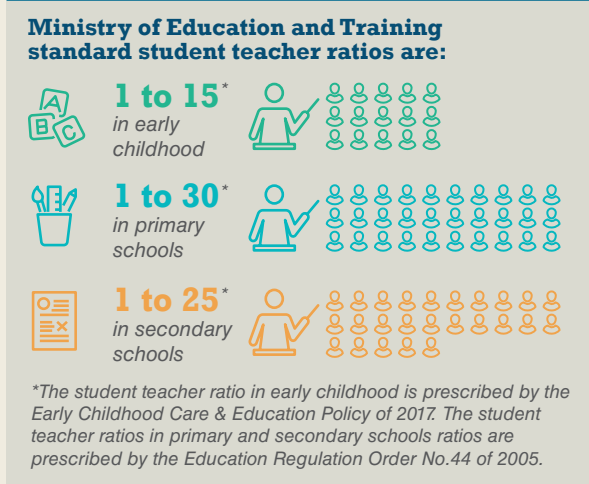


2022 Malampa Education Key Indicators

The Ministry of Education and Training Key Indicators are published every year. They help the ministry, provincial education offices, schools and development partners in their efforts to improve the sector.



Student teacher ratio per school type



Number of teachers per school type

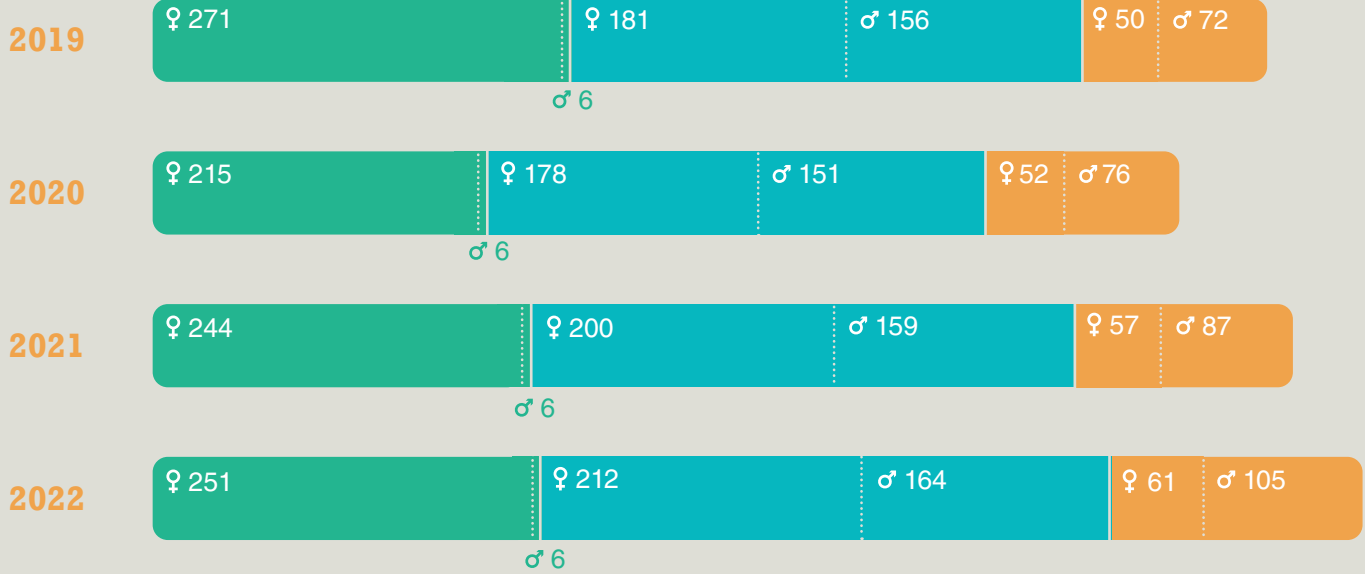
♀ Female

♂ Male

Early Childhood

Primary School

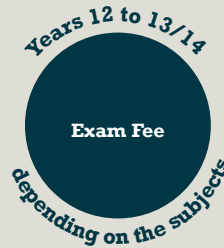
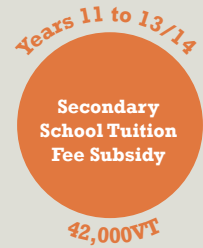
Secondary School



Annual grant in 2022 per student

Funded by the Government of Vanuatu

Funded by the Government of Vanuatu and supported by the Government of Australia



Ministry of Education & Training
Government of Vanuatu

Australian Aid